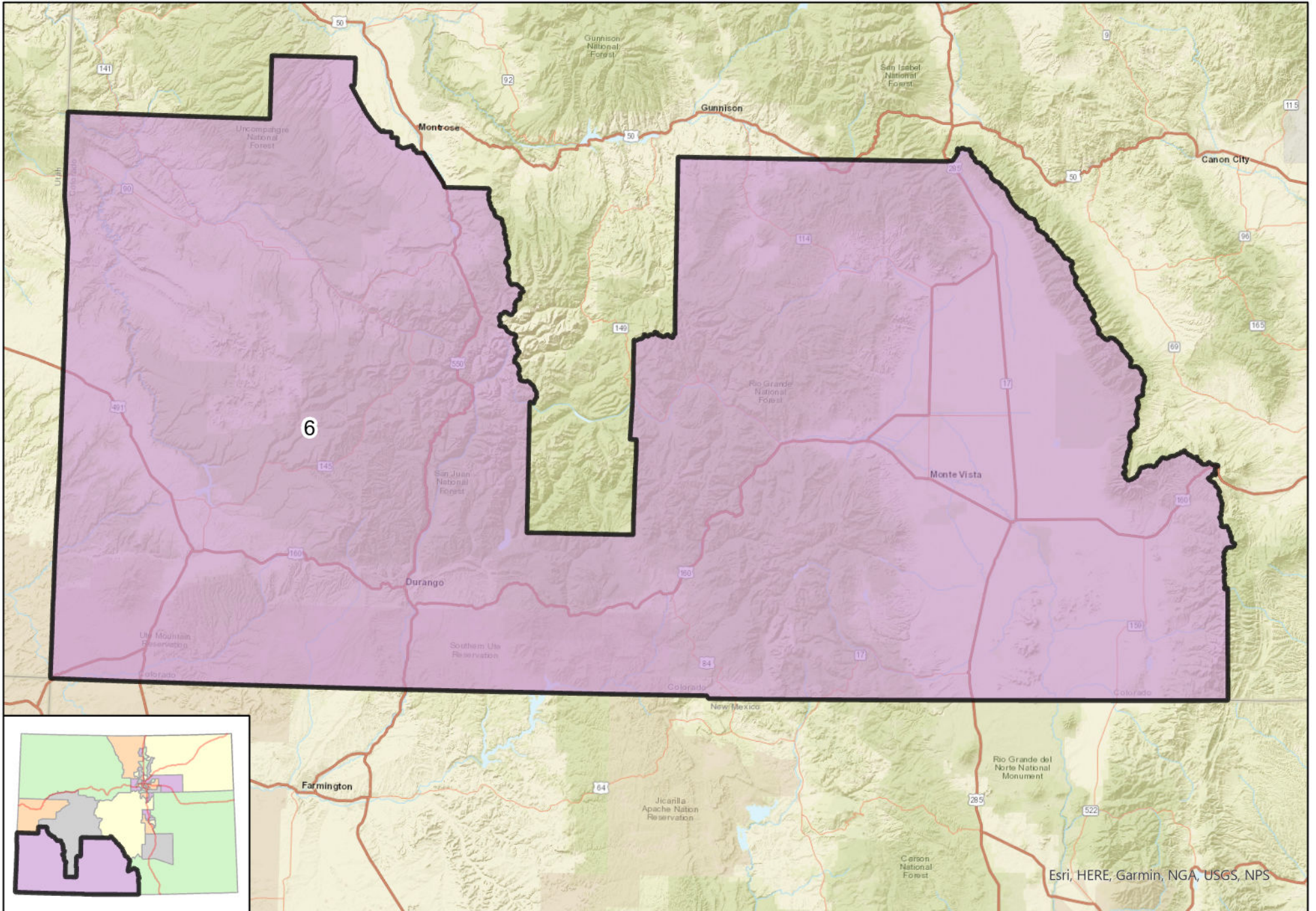


Colorado Senate District 6 (2021)



Map prepared by Colorado Independent Redistricting Commissions Staff.

This map reflects minor map adjustments requested by the Colorado Secretary of State and county clerks, as approved by the Colorado Supreme Court on March 18, 2022.



Colorado Senate District 6

2022-2031

Total Population (2020 Census): 161,109

Race	Percent
White	75.6%
Black or African American	0.5%
American Indian or Alaska Native	5.3%
Asian	0.7%
Native Hawaiian or Other Pacific Islander	0.1%
Some Other Race	6.4%
Multiracial	11.5%

Ethnicity	Percent
Hispanic or Latino	21.4%
Not Hispanic or Latino	78.6%

Voting Age Population: 129,096

Housing Units: 89,030

Percent Occupied: 76.4%

Percent Vacant: 23.6%

Congressional Districts: 3

State House Districts: 58, 59, 62

Counties:

Alamosa	Montezuma
Archuleta	Montrose
Conejos	Ouray
Costilla	Rio Grande
Dolores	Saguache
La Plata	San Juan
Mineral	San Miguel

Largest Municipalities and Communities:

Durango
Alamosa
Cortez
Monte Vista
Bayfield

School Districts:

School districts with more than 3% of their area in the senate district are included in this list.

Alamosa, Archuleta, Bayfield, Centennial, Center, Creede, Del Norte, Dolores, Dolores RE-2J, Durango, Gunnison, Ignacio, Mancos, Moffat Consolidated #2, Monte Vista, Montezuma, Montrose, Mountain Valley, North Conejos, Norwood, Ouray, Ridgway, Sanford, Sangre De Cristo, Sargent, Sierra Grande, Silverton, South Conejos, Telluride, West End

Registered Voters: 115,884

(active as of September 1, 2022)

Affiliation	Voters	Percent
Democrat	28,817	24.9%
Republican	34,052	29.4%
Minor Party	2,048	1.8%
Unaffiliated	50,967	44.0%

Election Differentials:

The commission analyzed the results of eight recent elections, three of which are included here, and reported results in each district as the difference between the percent of votes cast for the Republican candidate and the percent of votes cast for the Democratic candidate. A positive differential means the Republican would have won in the district, and a negative differential means the Democrat would have won in the district.

Election	Differential
2020 U.S. Senate <i>Hickenlooper (D) / Gardner (R)</i>	-0.2%
2018 Treasurer <i>Young (D) / Watson (R)</i>	-1.7%
2016 President <i>Clinton (D) / Trump (R)</i>	3.9%