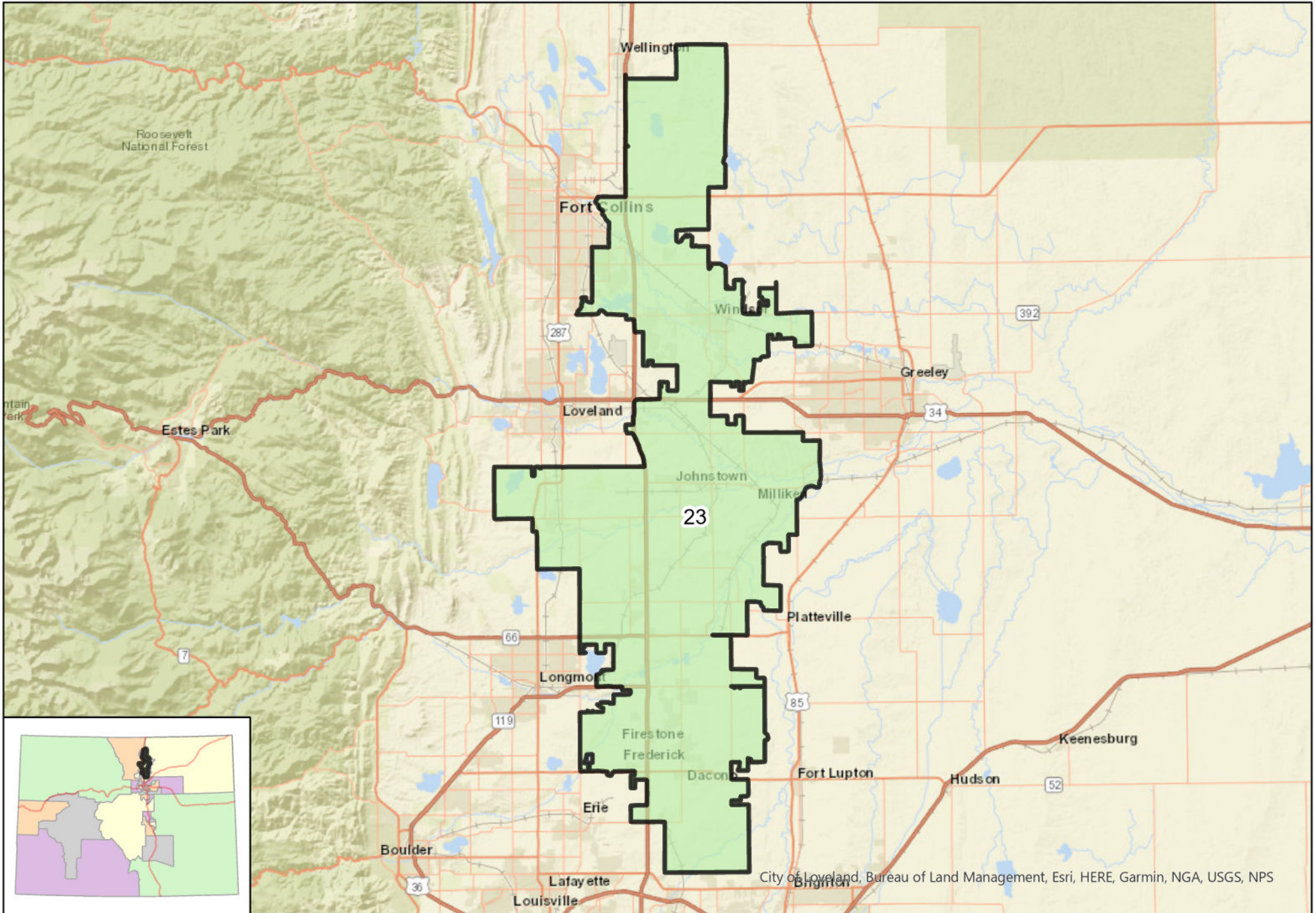


Colorado Senate District 23 (2021)



Map prepared by Colorado Independent Redistricting Commissions Staff.

This map reflects minor map adjustments requested by the Colorado Secretary of State and county clerks, as approved by the Colorado Supreme Court on March 18, 2022.



Colorado Senate District 23

2022-2031

Total Population (2020 Census): 160,735

Race	Percent
White	80.3%
Black or African American	0.7%
American Indian or Alaska Native	0.8%
Asian	2.5%
Native Hawaiian or Other Pacific Islander	0.1%
Some Other Race	5.0%
Multiracial	10.7%

Ethnicity	Percent
Hispanic or Latino	15.9%
Not Hispanic or Latino	84.1%

Voting Age Population: 117,869

Housing Units: 60,002

Percent Occupied: 94.8%

Percent Vacant: 5.2%

Congressional Districts: 2, 4, 8

State House Districts: 19, 33, 48, 49, 51, 52, 53, 63, 64, 65

Counties:

Larimer
Weld

Largest Municipalities and Communities:

Windsor
Fort Collins
Johnstown
Firestone
Frederick

School Districts:

School districts with more than 3% of their area in the senate district are included in this list.

Ault-Highland, Ft. Lupton, Gilcrest, Greeley, Johnstown, Poudre, St. Vrain, Thompson, Windsor

Registered Voters: 117,442

(active as of September 1, 2022)

Affiliation	Voters	Percent
Democrat	22,135	18.8%
Republican	39,605	33.7%
Minor Party	2,103	1.8%
Unaffiliated	53,599	45.6%

Election Differentials:

The commission analyzed the results of eight recent elections, three of which are included here, and reported results in each district as the difference between the percent of votes cast for the Republican candidate and the percent of votes cast for the Democratic candidate. A positive differential means the Republican would have won in the district, and a negative differential means the Democrat would have won in the district.

Election	Differential
2020 U.S. Senate <i>Hickenlooper (D) / Gardner (R)</i>	20.1%
2018 Treasurer <i>Young (D) / Watson (R)</i>	21.6%
2016 President <i>Clinton (D) / Trump (R)</i>	24.3%